

Deposition of Francois J. Castaing  
14 June 2011  
Exhibit One

In the matter of :

**KLINE** versus VICTORIA MORGAN-ALCALA, CARLOS ALCALA,  
NATALIE RAWLS, DAIMLERCHRYSLER CORPORATION (AKA  
CHRYSLER CORPORATION) LOMAN AUTO GROUP,  
CHRYSLER GROUP LLC, et al.



# Inter Company Correspondence

Telephone \_\_\_\_\_ Date 12/14/87

To — Name & Department \_\_\_\_\_ CIMS Number \_\_\_\_\_  
Jeep & Truck Engineering

From — Name & Department \_\_\_\_\_ CIMS Number \_\_\_\_\_  
F. J. Castaing

Subject: Organization Charts

Attached is a complete set of organization charts for Jeep & Truck Engineering.

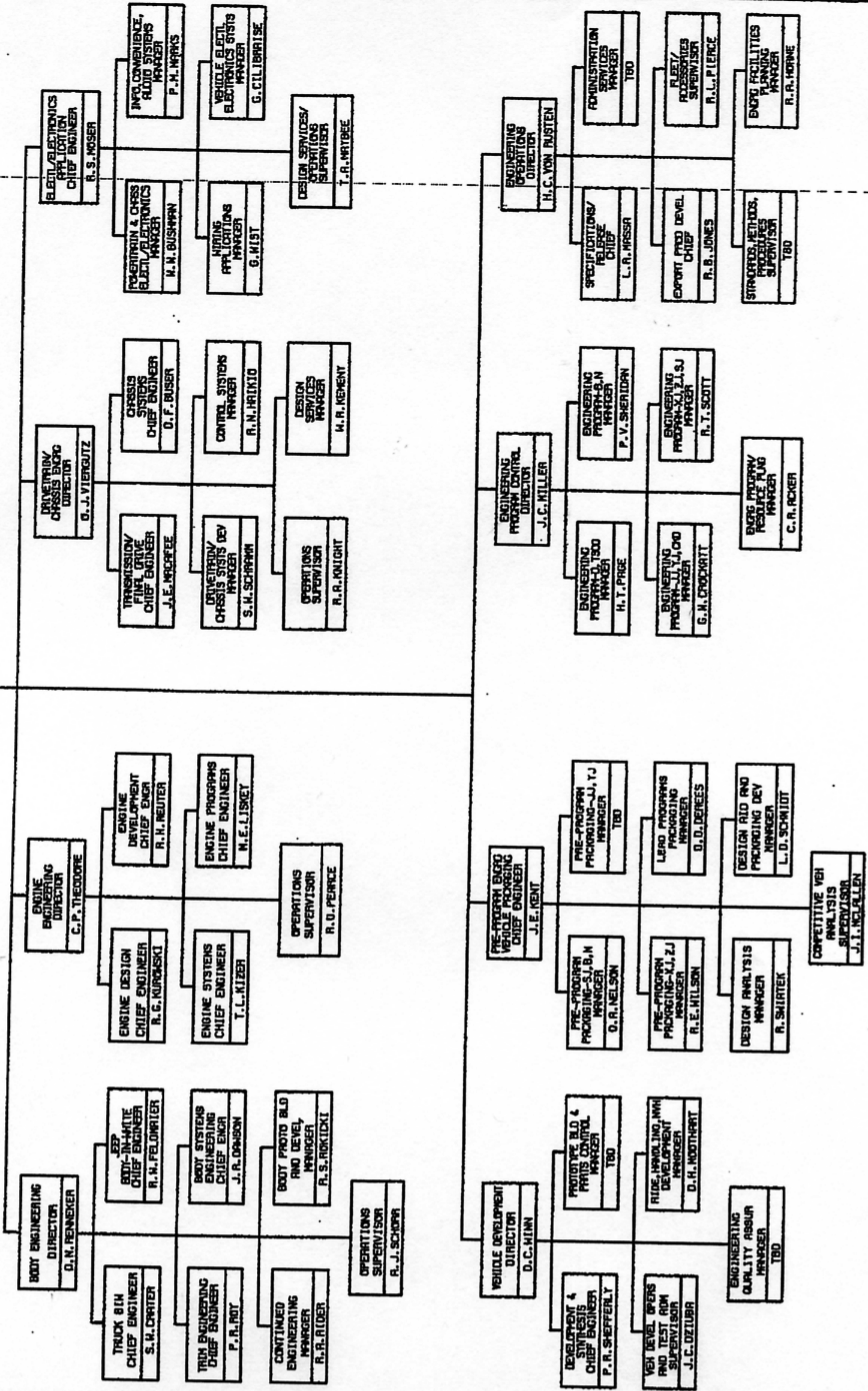
  
F. J. Castaing

**Δ π EXHIBIT** 1  
Deponent Castaing  
Date 6-14-11 Rptr. JAO  
WWW.DEPOBOOK.COM

JEEP AND TRUCK ENGINEERING  
DECEMBER 14, 1987

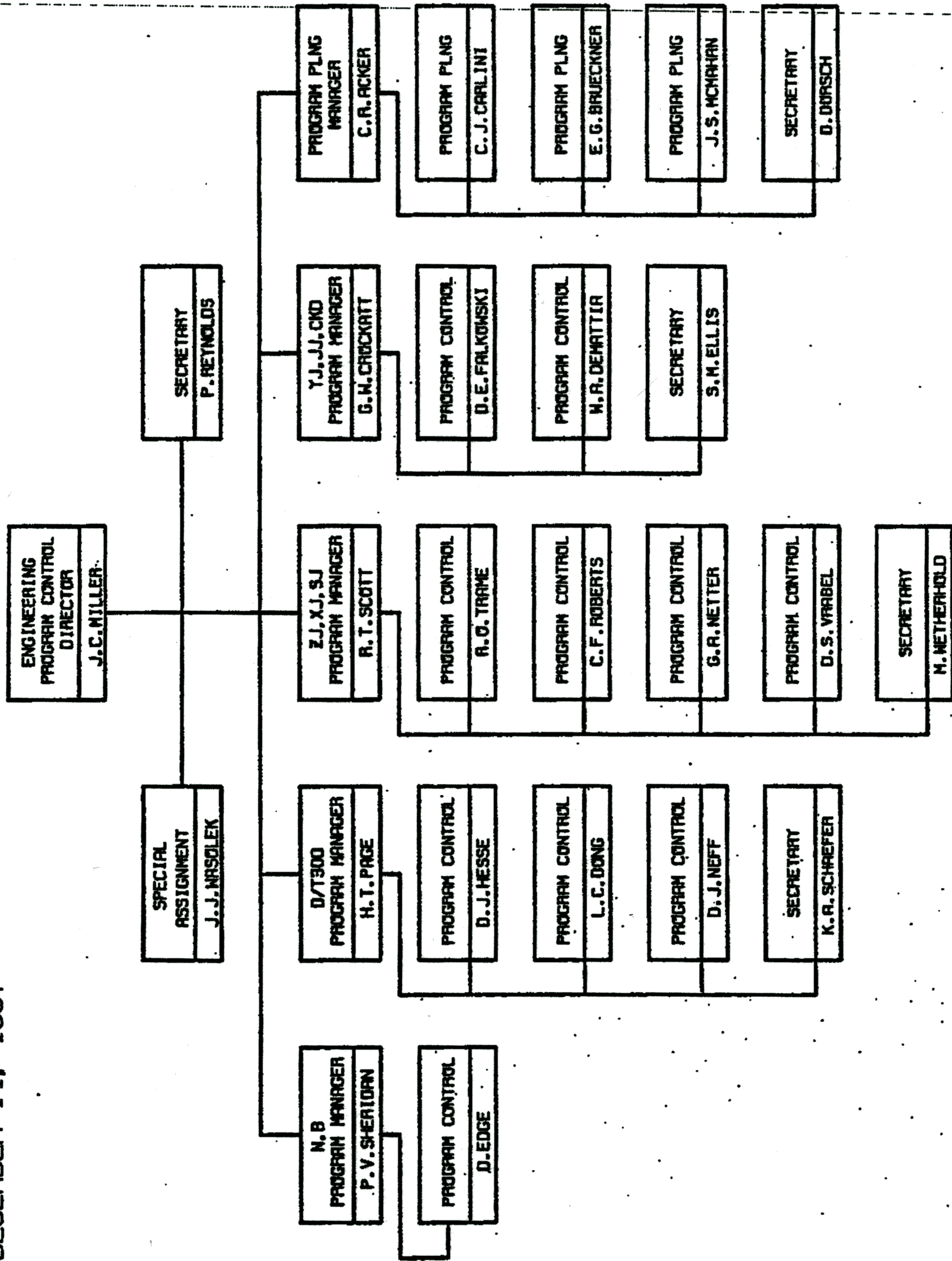
JEEP AND TRUCK  
ENGINEERING  
VICE PRESIDENT  
F. J. CASTRANG

EXECUTIVE  
SECRETARY  
D. IRONELLI



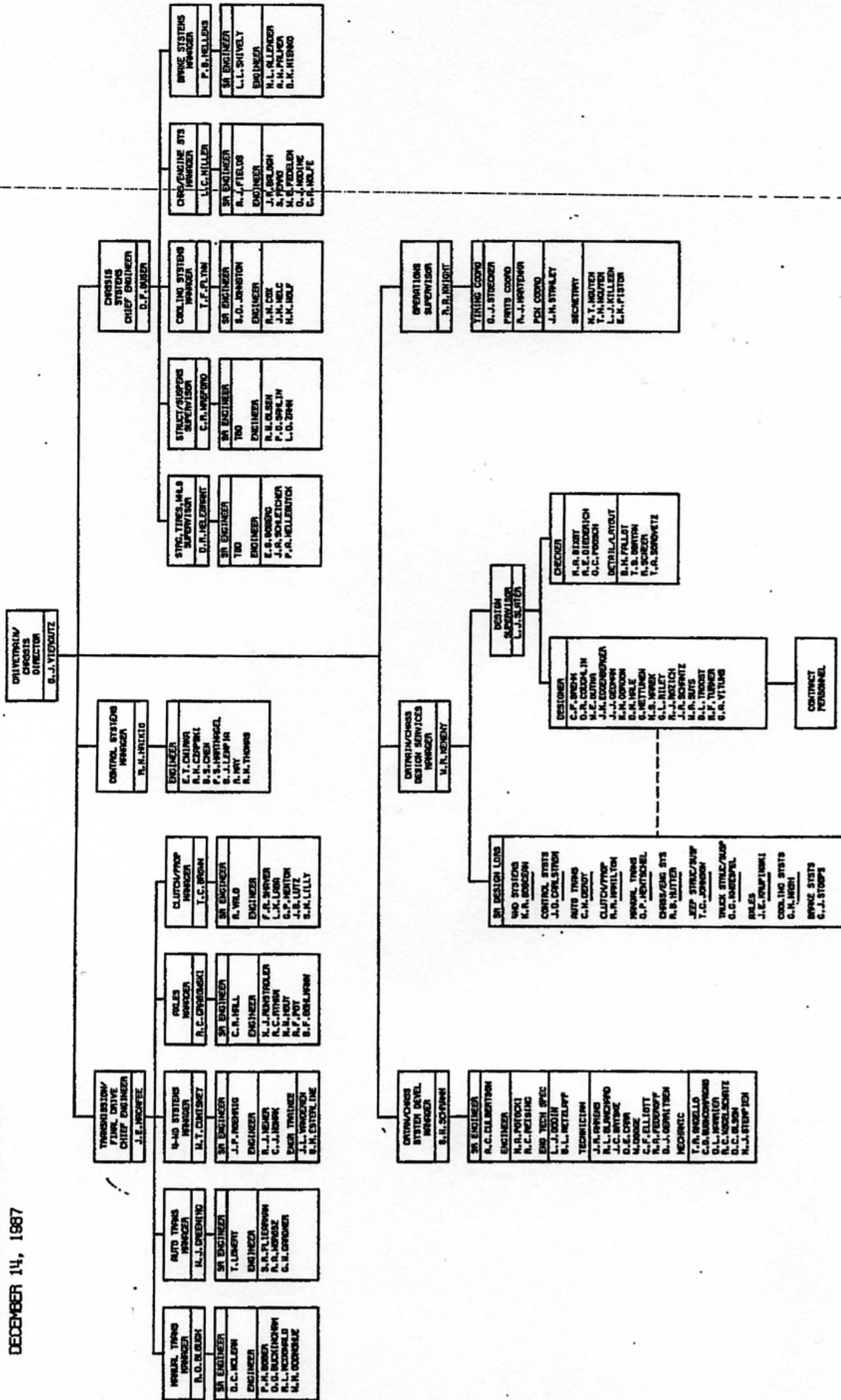


ENGINEERING PROGRAM CONTROL  
DECEMBER 14, 1987



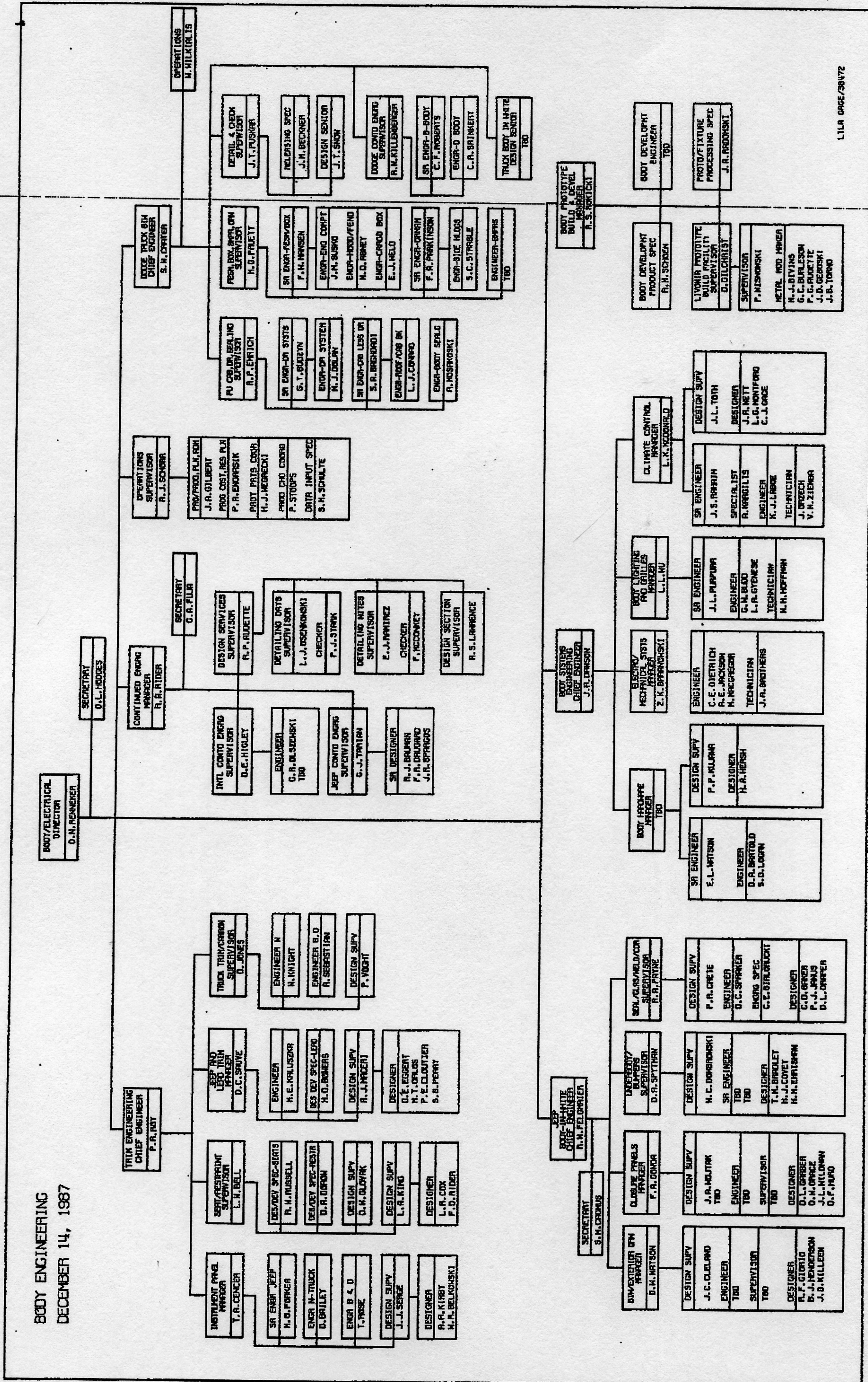


DRIVETRAIN/CHASSIS ENGINEERING  
DECEMBER 14, 1987





**BODY ENGINEERING**  
DECEMBER 14, 1987



L11A ORG/38U72

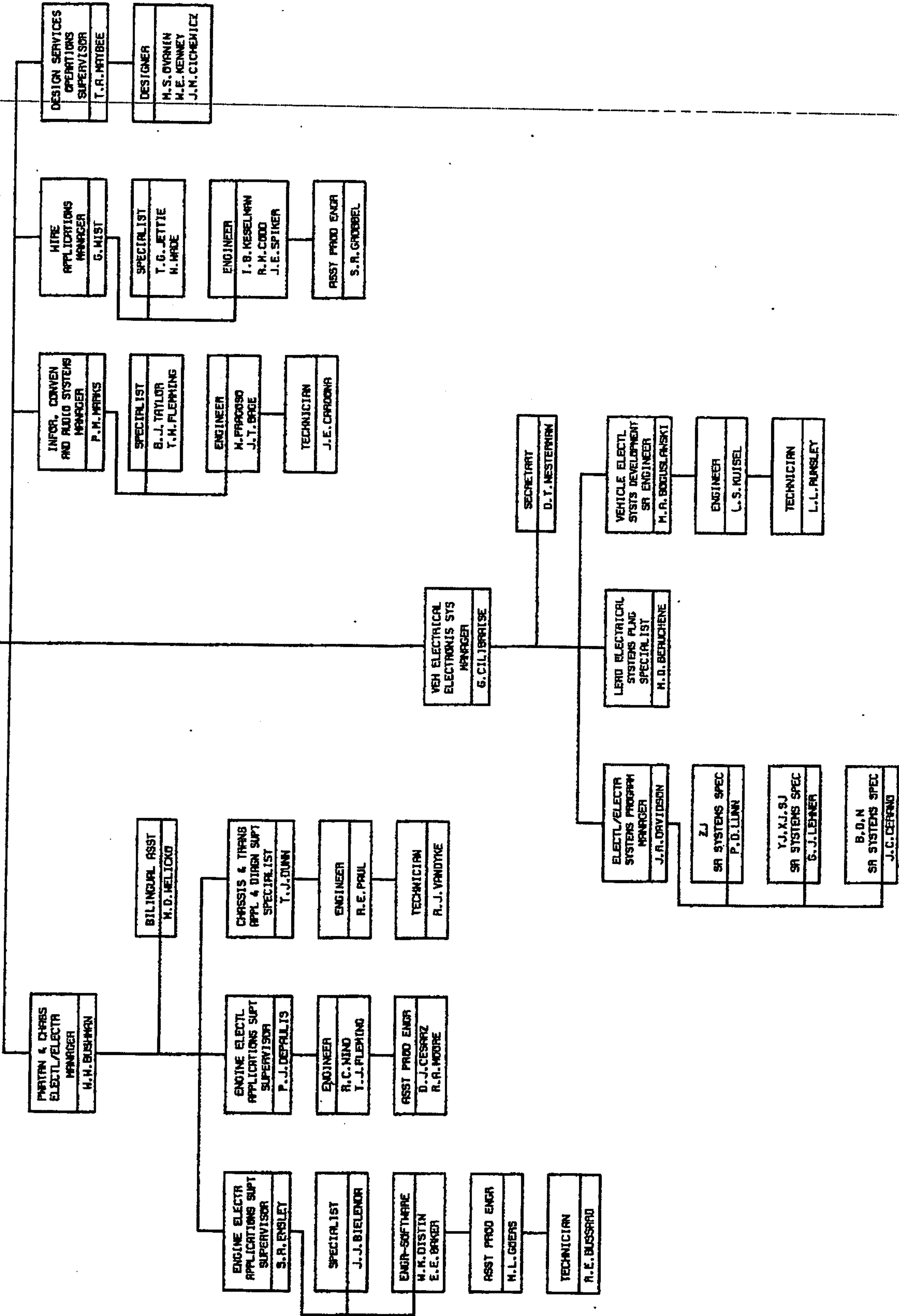


ELECTRICAL/ELECTRONICS

DECEMBER 14, 1987

ELECT/ELECTR  
APPLICATIONS  
CHIEF ENGINEER  
R. S. MOSEK

SECRETARY  
P. J. BERIKAT





VEHICLE DEVELOPMENT  
DECEMBER 14, 1987

VEHICLE DEVELOPMENT DIRECTOR  
D. C. MUNN

SECRETARY  
B. HOFER

VEHICLE DEVEL  
OPERS & TEST MGR  
SUPERVISOR  
J. C. DE LUCA

ENGINEER  
R. K. ZIEGLER  
G. MCCORD  
FLEET ADMIN  
R. R. JORDANVILLE  
ANALYST  
M. LEMERY

PROTO BUILD &  
PARTS CONTROL  
MANAGER  
TBD

PROTOTYPE BUILD  
SUPERVISOR  
J. R. BRACK

ENGINEER  
P. G. TELANO  
ASSOC ENGR  
M. S. BEDNARSKI  
L. R. HEVIZ  
CLERK  
B. A. WRESKY  
PARTS COORD  
S. J. OLLAR  
MECHANIC  
T. PRALAK  
J. HOSK  
R. FULLER

ENGRG MATERIAL  
CONTROL  
MANAGING SUPV  
L. BURBART

ENGRG MATERIAL CONT  
SUPERVISOR  
R. BROWN

ENGRGING STOCKROOM  
SUPERVISOR  
R. J. LANZETTA

NEW MODEL  
STOCKROOM  
COORDINATOR  
F. P. THAME

PRODUCTION  
STOCKROOM  
COORDINATOR  
M. R. CYRUS  
DRIVER/MECHANIC  
P. G. WIVES

PLATE, HANGING,  
AND BVM  
MANAGER  
D. H. WOODHART

MAN PROJECT MGMT  
JEEP/A TRUCK  
L. A. ROHRN  
D/S TRUCK  
J. A. DEGRANDT

PLATE/HANGING/TIME  
DEVELOPMENT  
SPECIALIST  
S. P. LYMAN  
ENGINEER  
E. R. HILL  
M. H. NEFFLER  
P. D. MATHIASZYN  
ASSOC ENGR  
J. P. MOSELEY  
MECHANIC  
C. LOCK  
H. HILL

ENGINEERING  
QUALITY ASSUR  
MANAGER  
TBD

QUALITY  
ASSURANCE  
SPECIALIST  
L. M. BRER  
SPECIALIST  
J. T. PETROSKI  
SR ENGINEER  
R. A. ALLISON  
ENGINEER  
R. BRADINSKI  
M. L. HOOD

SAFETY  
COMPLIANCE  
SPECIALIST  
E. R. ZILNIK  
ENGINEER  
D. F. FLENNY  
ANALYST  
G. A. GRADOLFO  
SERVICABILITY  
PLANNING  
ENGINEER  
E. SOVA

SECRETARY  
P. L. HORTON

DEVELOPMENT &  
SYNTHESIS  
CHIEF ENGINEER  
P. R. SHEFFERLY

SECRETARY  
K. H. THRI

SJ, YJ, B  
VAN PLATFORM  
SUPERVISOR  
C. R. NEAR

ENGINEER  
S. H. ANDERSON  
TECHNICIAN  
D. HEIKKILA

H TRUCK PLATFORM  
SUPERVISOR  
R. F. BRUER

ENGINEER  
L. H. NEAL  
R. K. JORDAN  
TECHNICIAN  
S. HANK

O TRUCK PLATFORM  
SUPERVISOR  
D. J. SMIESKAK

SR ENGINEER  
K. A. MUNRO  
ENGINEER  
M. C. RALPH  
R. J. BURN  
TECHNICIAN  
D. THOMPSON

XJ, ZJ PLATFORM  
MANAGER  
M. R. ORTIZEL

SR ENGINEER  
L. G. HINGELER  
ENGINEER  
C. N. DOLOPOULOS  
P. L. LAMONT  
TECHNICIAN  
A. JOHNSON/EMITZ



PRE-PROGRAM ENGINEERING & VEHICLE PACKAGING  
 DECEMBER 14, 1987

