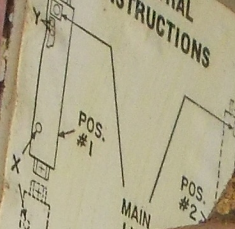




04.11.2019 12:32



NEUTRAL INSTRUCTIONS



...ve mai
...mounting e
...side of ne
...assemble sec
end.

Box bonding s
shown by "X"

When requir
Al-Cu lug CH9
tral bar wire
to main neutr
on sketch.

This device accep
GP21 grounding
holes in the CH9C
=14.4 single Al-
combinations of u
wires. Log Cat. I
assembled to CH9
shown on instruct
with ground bar.

CUTLER

Pub. 14903

MAIN

60

20

15

15

15

15

15

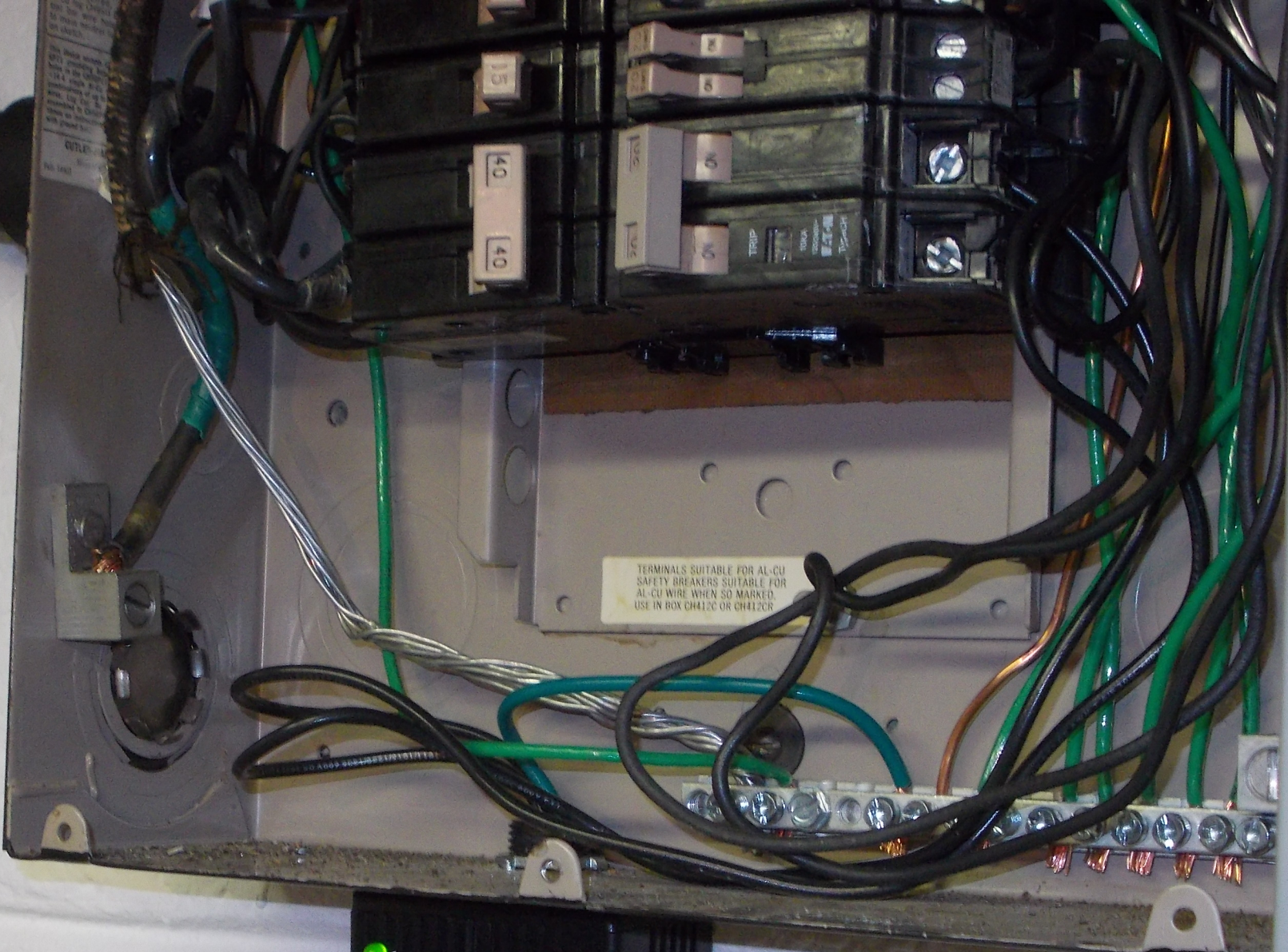
15

15

40

NO

04.11.2019 12:32



TERMINALS SUITABLE FOR AL-CU
SAFETY BREAKERS SUITABLE FOR
AL-CU WIRE WHEN SO MARKED.
USE IN BOX CH412C OR CH412CR



SYCOM
SYC - 120/240 - T1
Type 1 SPD Type 4X Enclosure
120/240V 60Hz Single Phase
In=20kA SCCR=200 kA
MCOV=150VAC L-G 320VAC L-L
VPR=600VAC L-G 1000VAC L-L
Contains No Servicable Parts

04.11.2019 12:32